

## Class 1 Prepared forge

75min

### Italian Hind

**270x25x10**

Width 124mm

Toe to outside heel 155mm

Between heels 57 mm

### Nail Esl 4

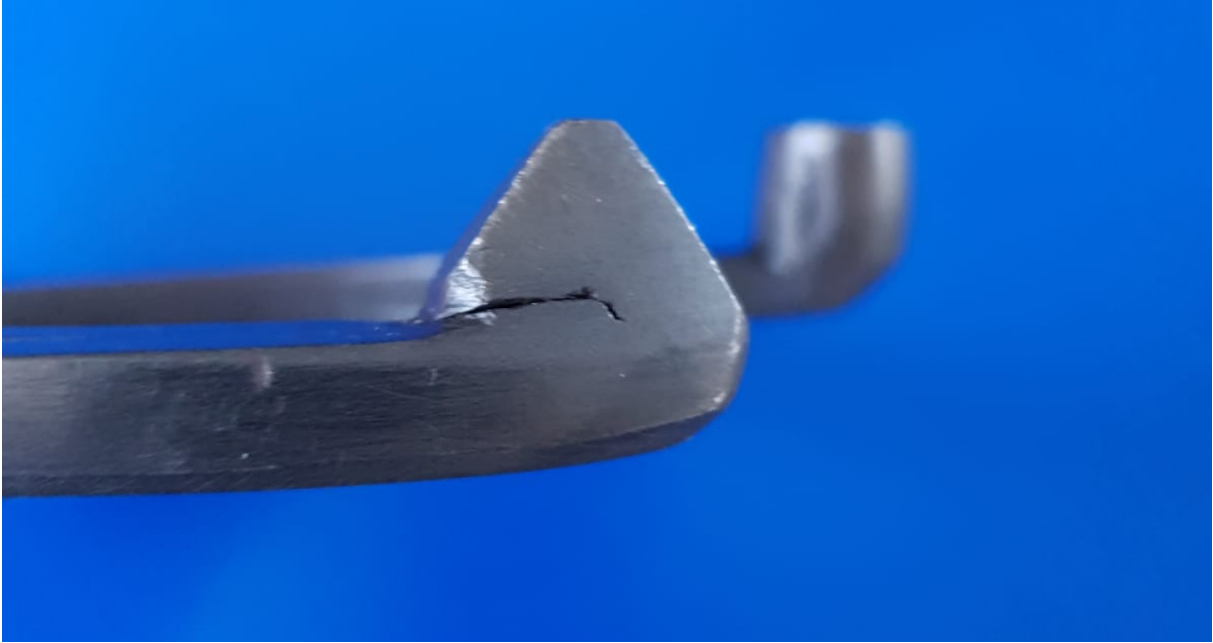
Toe width 29 mm

Toe to inside heel 144 mm

Clip height 29 mm











Class 2 Speed forge

25min

Aluminium Eggbar

380x25x10

Nail Esl 5

Width 138

Length 156



---

**Class 3 Surprise forge**

75min

---

**Class 4 Shoeing + Specimen**

75min

---

**Roadster**

**280x25x12mm**

**Nail Esl 6**

Width 125mm

Between heels 60mm

Toe to outside heel 146mm

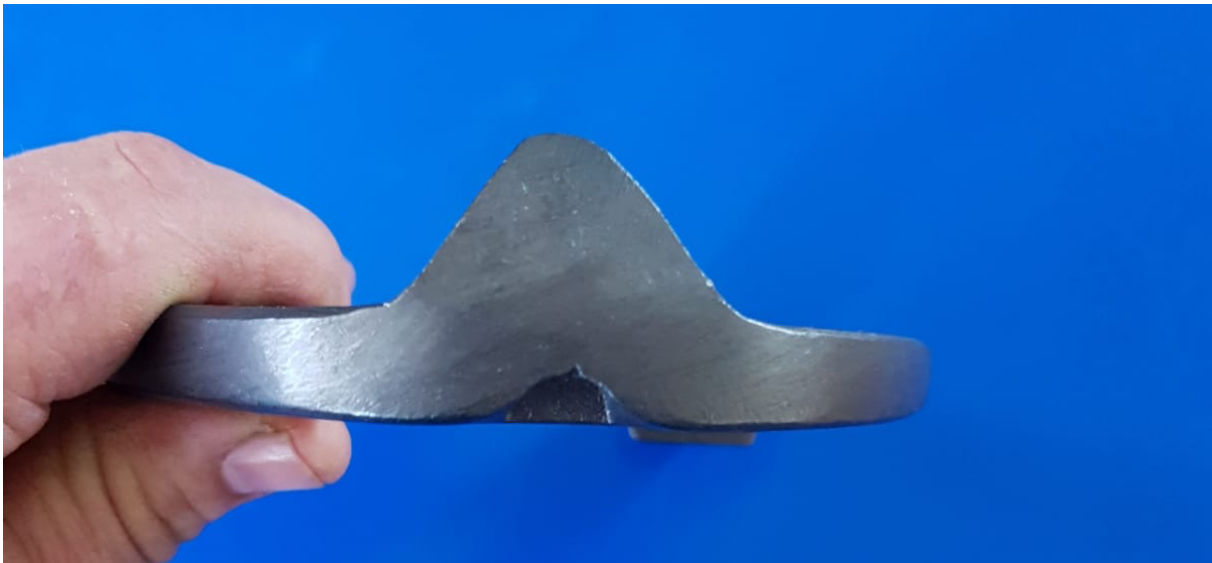
Toe to inside heel 135 mm

Heel height 19 mm

**Shoeing**

25x10mm  $\frac{3}{4}$  Fullered, Toe Clip front & hind







---

## Final Shoeing

85min

**Shoeing**      30x12mm  
                      $\frac{3}{4}$  Fullered  
                     toe clip front & hind